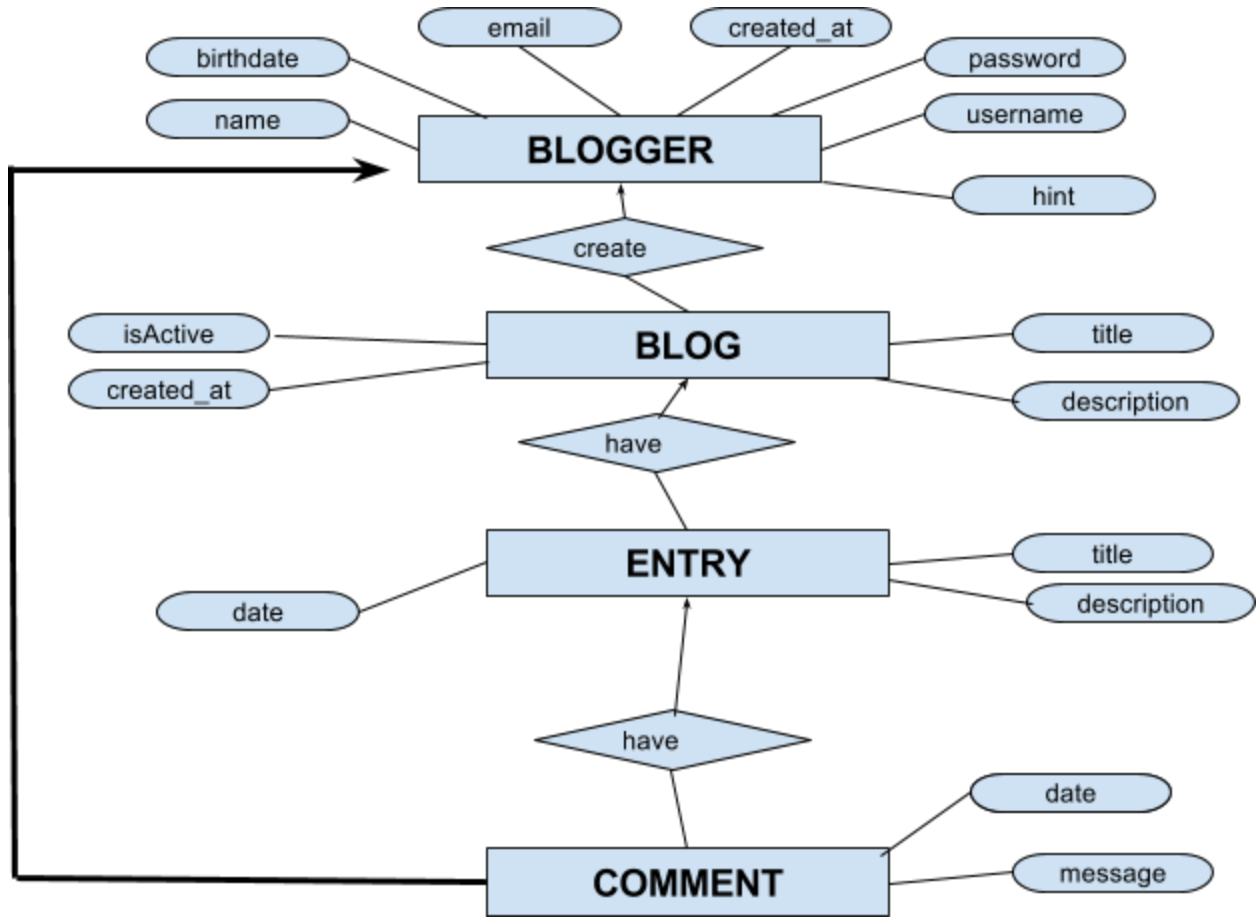
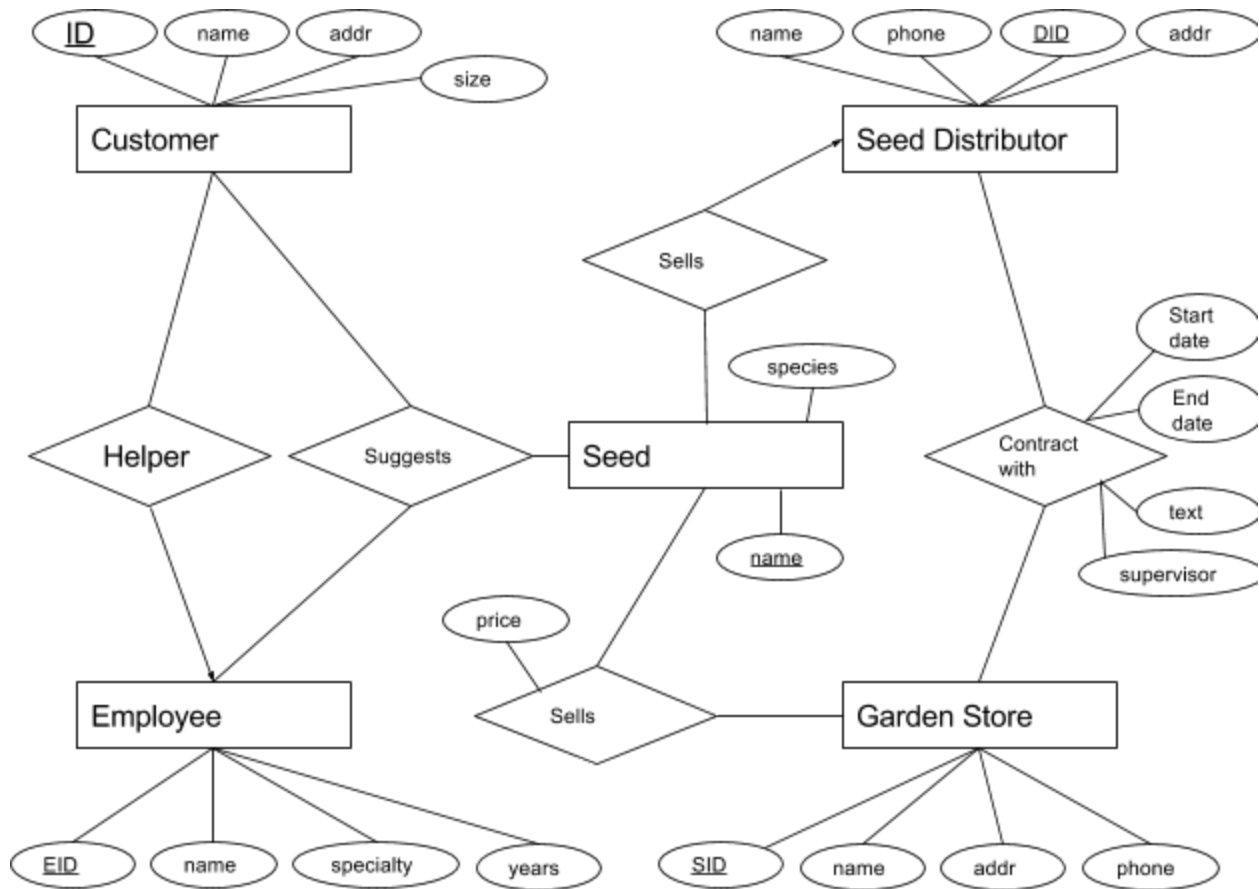


Exercise 1:



Exercise 2:

1)



2)

Remove the “price” attribute from the “sells” relationship and associate it with the seed entity as well.

3)

Add a new field to the “helper” relationship that links it to a garden store. Also now it’s a many to many relationship.

Exercise 3:

1. List all the foreign key constraints among these relations.

Foreign key constraints::

- Student (none)
- Faculty(none)
- Courses(none)
- Rooms(none)
- Enrolled(student_id, course_id)
- Teaches(faculty_id, course_id)
- Meets_In(course_id, room_no)

2. Give an example of a (plausible) constraint involving one or more of these relations that is not a primary key or foreign key constraint.

Many examples exist: students enrolled in multiple courses that meet at the same time, negative GPA, etc.